

METHODOLOGY

Japan's Best Physical Rehabilitation Facilities 2026

Scope, Data Collection, Evaluation, and Results

statista 

Newsweek



★ ★ ★ ★ ★
**JAPAN'S
BEST
PHYSICAL
REHABILITATION
FACILITIES**
2026
Newsweek
POWERED BY
statista 

Methodology – Japan's Best Physical Rehabilitation Facilities 2026

Summary of the project

- The first edition of **Japan's Best Physical Rehabilitation Facilities** ranking awards the leading inpatient physical rehabilitation facilities in Japan.
- Physical rehabilitation facilities are inpatient healthcare institutions that provide rehabilitation services to patients who stay overnight for treatment, typically following surgery, injury, or serious illness. These patients require daily, structured physical therapy under medical supervision.
- The list is based on **three data pillars**:
 - **Reputation Score**
 - **Quality & Performance Indicators**
 - **Patient Satisfaction**

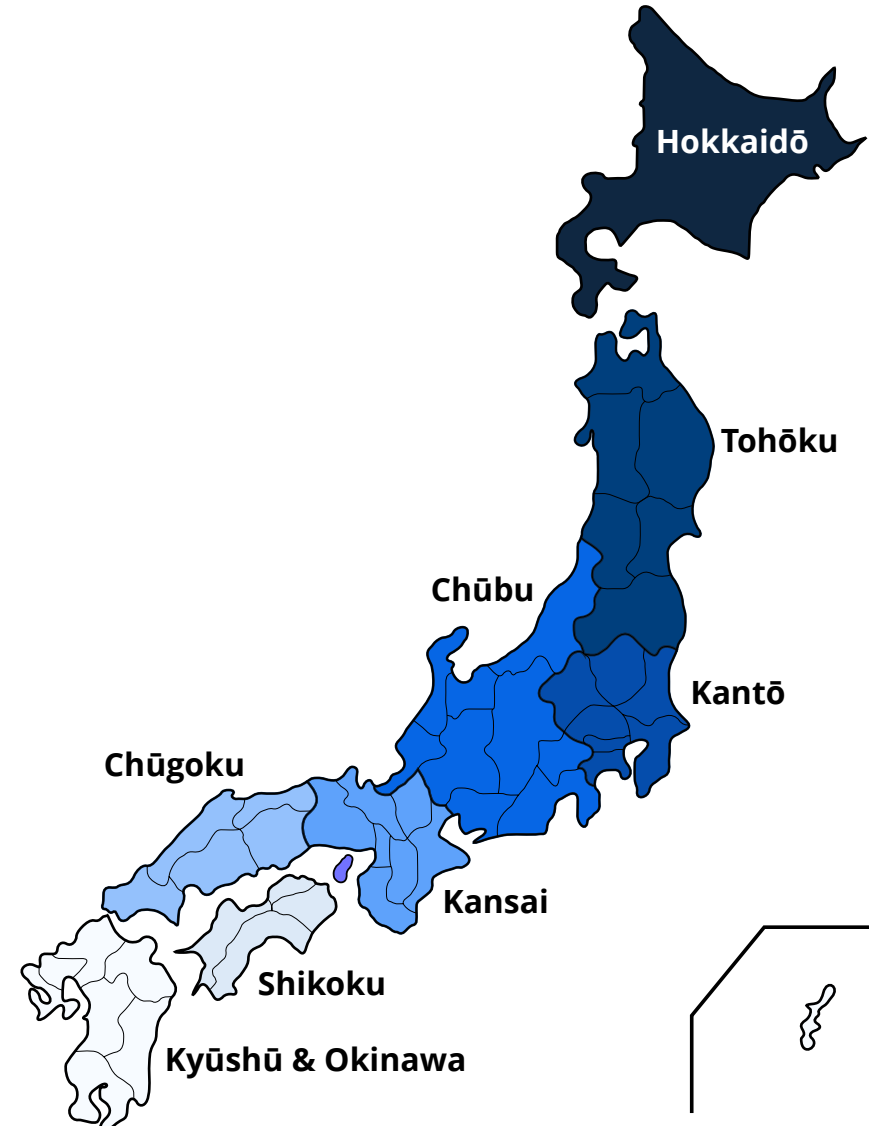
Physical rehabilitation facilities from all regions were eligible for the ranking

Eligibility criteria

Physical rehabilitation facilities from **all regions and prefectures** were eligible for inclusion in the ranking. Within the evaluation, facilities were included from all prefectures across Japan.

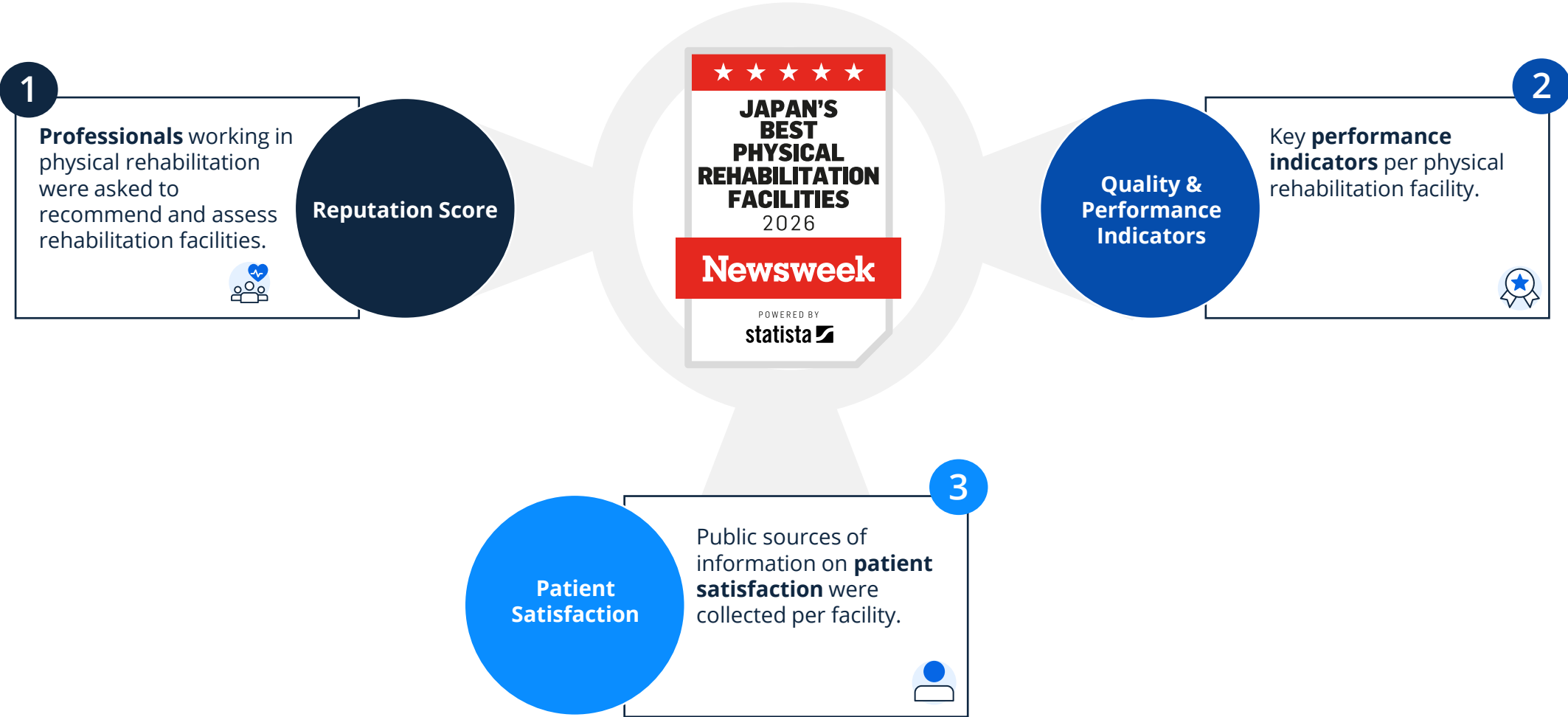
To be eligible for inclusion in the ranking, facilities were required to offer inpatient rehabilitation including overnight accommodation and amenities.

Facilities of varying sizes and ownership structures were represented in the sample, including both public and private institutions.



Physical Rehabilitation Facility evaluations are based on three pillars

Data pillars



Professionals provide expert recommendations for top facilities

Expert-informed evaluation of rehabilitation facilities

1 Reputation Score - recommendations from peers

From February to March 2026, Statista conducted a nationwide online survey among medical professionals (e.g., physicians, therapists, nurses) and managers/administrators who work in physical rehabilitation facilities. The survey was also available on Newsweek.com. Additionally, participants were invited via e-mail.



Online survey among medical professionals and managers/administrators working in physical rehabilitation centers.



Participants were asked to recommend the **top physical rehabilitation centers** in Japan. Recommendations for their own employer were not permitted.



The order of the recommendations and professional experience of the participant were taken into account. A **score was assigned** to each facility based on the number of weighted recommendations.

REPUTATION SCORE

Quality assessments provide multi-dimensional assessment of the physical rehabilitation facility

Structured multi-dimensional evaluation of rehabilitation facilities

1 Reputation Score – quality assessment

For each recommended physical rehabilitation facility, participants were asked to assess **four quality dimensions** on a scale from 1 (“Poor”) to 10 (“Excellent”):

- **Quality of care** (e.g., treatments/therapies, consultation with doctor/therapist)
- **Quality of follow-up care** (e.g., outpatient therapies)
- **Quality of service** (e.g., meals, leisure activities)
- **Accommodation & amenities** (e.g., size of room, quality of furnishing)

A quality score was assigned to each facility based on the **weighted average** of these ratings.

Dimension weights

Quality score

↑ 60% Quality of care

↑ 20% Quality of follow-up care

↑ 10% Quality of service

↑ 10% Accommodation & amenities

QUALITY SCORE

Quality metrics represent objective performance against national standards

Rehabilitation specific performance-based indicators of quality

2 Quality & Performance Indicators

For each recommended physical rehabilitation facility, the assessment focused on key quality criteria:

- **Accreditation & specialized rehabilitation standards:** Measured using JCQHC⁽¹⁾ status, reflecting compliance with nationally recognized standards for patient safety and care quality. Affiliation with rehabilitation-focused organizations, including KRWA⁽²⁾ and JARM⁽³⁾ were included to reflect domain-specific guidelines and best practices in Japanese rehabilitation care.
- **Operational performance:** Derived from publicly available KRWA⁽²⁾ reports, which provide hospital-level indicators of rehabilitation intensity and quality in Japan's post-acute inpatient rehabilitation system. Metrics include a disease-adjusted performance index, rehabilitation units per patient per day (the daily intensity of therapy a patient receives), and rehabilitation fee category (a national classification reflecting facility resources such as staffing levels and equipment quality).

Dimension weights



QUALITY AND PERFORMANCE SCORE

Quality & Performance Indicators: Key Data Sources

Key organisations included in scoring model



Japan Council for Quality Health Care (JCQHC)

The JCQHC is Japan's national accreditation body for hospitals and healthcare facilities. It evaluates compliance with recognized safety, quality, and patient care standards.

In our scoring methodology, JCQHC accreditation serves as a measure of structural quality, indicating that a facility meets nationally accepted benchmarks.



Kaifukuki Rehabilitation Ward Association (KRWA)

KRWA is a nationwide association that brings together facilities specializing in rehabilitation care to support quality improvement, share best practices, and promote standardized approaches to rehabilitation services.

KRWA also collects and publishes performance-related data from member facilities, such as Functional Independence Measure (FIM) gains, rehabilitation intensity, and other operational metrics.

In our scoring, KRWA data is used to assess how the efficacy of care delivery at each facility.



The Japanese Association of Rehabilitation Medicine (JARM)

JARM is a professional society for rehabilitation medicine specialists in Japan. It develops clinical guidelines and promotes best practices for rehabilitation care.

In our scoring methodology, JARM affiliation helps capture adherence to specialized rehabilitation standards and domain-specific best practices.

Patient satisfaction provides a user-level perspective of care quality

Public sources of information on patient satisfaction

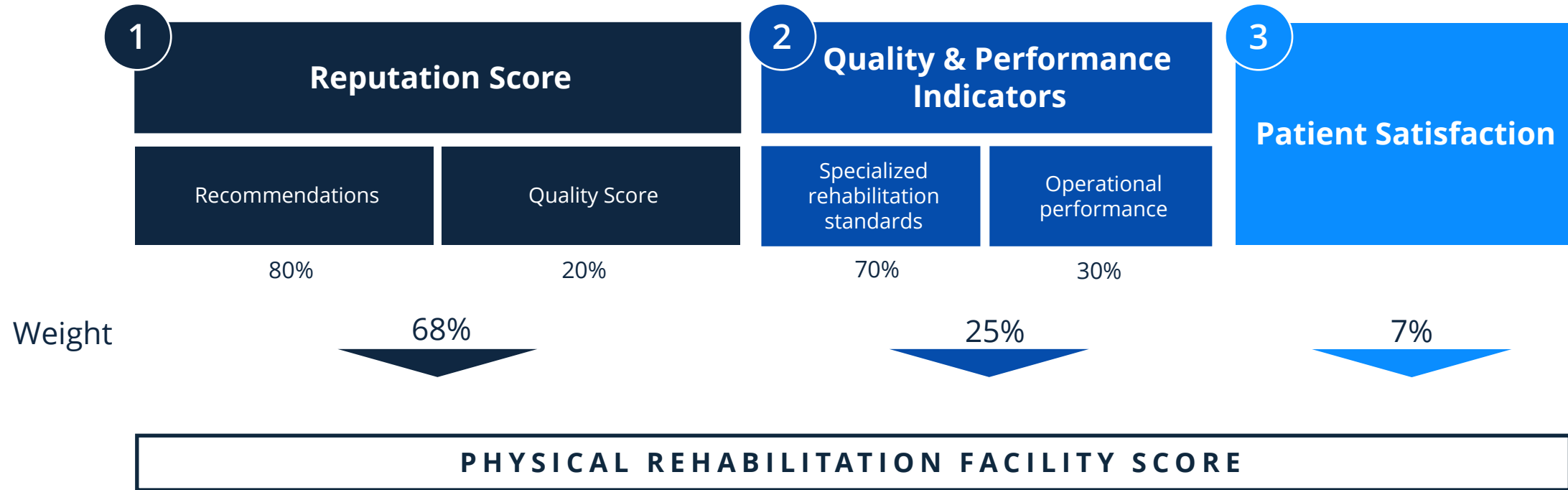
3 Patient Satisfaction

- Patient experience and satisfaction data were sourced from Caloo⁽¹⁾, a Japan-specific online platform that provides information on hospitals and medical clinics and allows patients to share and rate their experiences.
- Patient satisfaction is a key indicator of care quality from the patient's perspective, influencing both the expected quality of care for future patients and a facility's reputation and financial performance.
- For each facility, Caloo ratings were used as a proxy for patient satisfaction. These reviews offer standardized star ratings based on real patient feedback and enable the identification of satisfaction trends over time.
- A satisfaction score was assigned to each facility based on its star rating relative to all evaluated facilities. To ensure reliability, only facilities with a minimum of five reviews were included in the scoring.

PATIENT SATISFACTION SCORE

Three data pillars are combined to create a final score per facility

Scoring model



As a result, 300 physical rehabilitation facilities were awarded

Final physical rehabilitation facilities

Country Rank	Facility	City	Prefecture	Region	Region Rank
1	Morinomiya Hospital	Osaka	Osaka	Kansai	1
2	Hamamatsu City Rehabilitation Hospital	Hamamatsu	Shizuoka	Chubu	1
3	Fujita Health University Hospital	Toyoake	Aichi	Chubu	2
4	Kumamoto Rehabilitation Hospital	Kumamoto	Kumamoto	Kyushu & Okinawa	1
5	Nishihiroshima Rehabilitation Hospital	Hiroshima	Hiroshima	Chugoku	1

[...]

300 LEADING PHYSICAL REHABILITATION FACILITIES WERE AWARDED

Japan's Best Physical Rehabilitation Facilities partner network

Overview of involved parties

Newsweek

About Newsweek

Newsweek is a premier news magazine and website that has been bringing high-quality journalism to readers around the globe for over 80 years.

Newsweek provides the latest news, in-depth analysis and ideas about international issues, technology, business, culture and politics. In addition to its online and mobile presence, Newsweek publishes weekly English print editions in the United States, Europe/Middle East/Africa and Asia as well as editions in Japanese, Korean, Polish, Serbian and Spanish.

Find out more at [newsweek.com](https://www.newsweek.com)



About Statista R

Statista R is a world leader in the creation of company, brand, and product rankings and top lists, based on comprehensive market research and data analysis: Statista R recognizes the best. With a team of over 100 expert analysts and in cooperation with more than 40 high profile media brands across all continents, Statista R creates transparency for consumers and business decision makers and helps companies build trust and recognition across a plethora of industries and product categories. Visit r.statista.com for further information about Statista R and our rankings.

Statista R is a division of Statista. The leading data and business intelligence portal provides an extensive collection of statistics, reports, and insights on over 80,000 topics from 22,500 sources in 170 industries. Find out more at [statista.com](https://www.statista.com).

Disclaimer

The rankings are comprised exclusively of physical rehabilitation facilities that are eligible regarding the scope described in this document. A mention in the ranking is a positive recognition based on peer recommendations, quality metrics, public sources of patient experiences, and accreditations. The ranking is the result of an elaborate process which, due to the interval of data-collection and analysis, reflects the last 12 months only. Furthermore, any events preceding or following the period April 1st 2025 – March 31st 2026, and/or pertaining to individual persons affiliated/associated to the facilities were not included in the metrics. As such, the results of this ranking should not be used as the sole source of information for future deliberations.

The information provided in this ranking should be considered in conjunction with other available information about physical rehabilitation facilities or, if possible, accompanied by a visit to a facility. The quality of physical rehabilitation facilities that are not included in the rankings is not disputed.